



Eden Girls

Advice and Guidance for Safeguarding Children in Coventry

April 2016



Eden Girls

Websites for Advice and Guidance in Coventry

http://coventrychildcare.proceduresonline.com/chapters/p_thresholds.html

Coventry Local Authority Children's Social Care
Thresholds and Practice Standards

<http://www.coventry.gov.uk/safeguardingchildren>

Coventry Local Authority Guidance – Safeguarding
Children: Worried that someone you know is being
harmed or neglected?

REFERRAL GUIDANCE – Eden Girls' School Coventry

REASONS WHY SOME PEOPLE HESITATE TO REPORT ABUSE

The following list contains a range of reasons why people commonly hesitate to report abuse. It is provided for information, but be aware that none of these reasons is a justification for failing to report a child protection concern or disclosure.

- The child asks you to keep silent – keep a secret
- Fear of breaking up the family
- Fear of exposing the child to further abuse
- Fear of breaking a trusting relationship with child/family
- Painful memories of your own abusive experiences
- Fear of reprisals to yourself/your children/family
- Fear of presenting evidence in court
- Afraid of misinterpreting or overreacting to the situation
- Assuming another agency is dealing with the problem
- The 'rule of optimism' – everything will work out OK
- Assuming one parent/carer will protect
- Believing the child is fantasising/lying
- Being persuaded by the child's retraction
- Allowing a temporary improvement in the child's situation to distract you from the reality of continuing abuse
- Being unable to comprehend the unbelievable nature of the disclosure
- Not understanding procedures

WHY CHILDREN CAN'T TELL ABOUT ABUSE

- Threats from abuse – withdrawal of 'favours' or physical threats – may be implicit derived from abuse of power
- Threats from peers also involved in abuse
- May think s/he is to blame and fear arrest
- Fear the loss of the child's world – family, school etc.
- May be emotionally dependent on abuser
- May have compartmentalised abuse
- Thinks won't be believed
- Low sense of self-esteem makes disclosure difficult
- May not realise sexual abuse is a crime – thinks it's normal
- May not wish to betray abuser
- May fear exposure and particularly public exposure
- May be ambivalent about sexual identity or feel guilt about taking part in abuse
- Lack of faith in justice system particularly for children with disabilities and from ethnic minorities
- Hasn't got adult permission to tell
- Lack of appropriate language skills

WHY REFER?

- Children have the right to be safe
- Adults have a responsibility to protect children
- Abuse is damaging
- Child abuse exists in a world of secrecy and silence – the cycle of abuse has to be broken
- You only have one small piece of a jigsaw
- Children rarely lie about abuse
- An abuser may well abuse many other children who also have a right to protection

For guidance and support, contact the Children's Social Care Referral and Assessment Service Telephone: 024 7678 8555.

MAKING A DECISION

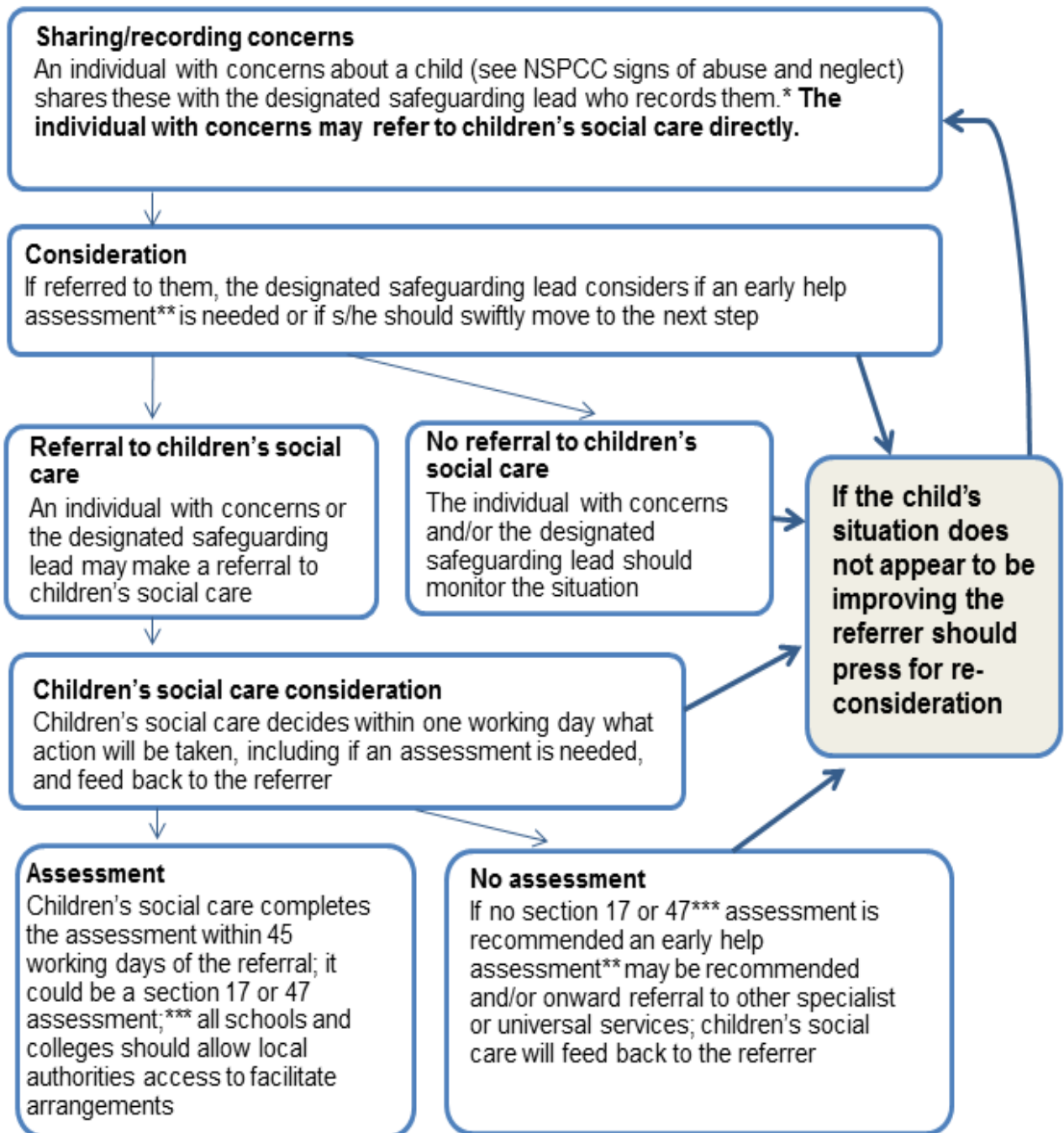
Further guidance on making a decision is provided in the Children's Social Care, Thresholds and Practice Standards, available at:

http://coventrychildcare.proceduresonline.com/chapters/p_thresholds.html

Action when a child has suffered or is likely to suffer harm

This diagram illustrates what action should be taken and who should take it when there are concerns about a child. If, at any point, there is a risk of immediate serious harm to a child a referral should be made to children's social care immediately.

Anybody can make a referral.



* In cases which also involve an allegation of abuse against a staff member, see part four of this guidance which explains action the school or college should take in respect of the staff member

** Where a child and family would benefit from coordinated support from more than one agency (eg, education, health, housing, police) there should be an inter-agency assessment. These assessments should identify what help the child and family require to prevent needs escalating to a point where intervention would be needed via a statutory assessment under the Children Act 1989. The early help assessment should be undertaken by a lead professional who could be a teacher, special educational needs coordinator, General Practitioner (GP), family support worker, and/or health visitor.

*** Where there are more complex needs, help may be provided under section 17 of the Children Act 1989 (children in need). Where there are child protection concerns local authority services must make enquiries and decide if any action must be taken under section 47 of the Children Act 1989.

Professional Abuse Flow Chart

An allegation may relate to a person who works with children who has:

- behaved in a way that has harmed a child, or may have harmed a child;
- Possibly committed a criminal offence against or related to a child; or
- behaved towards a child or children in a way that indicates they may pose a risk of harm to children.

REMEMBER!

Is the child safe?

Document everything

Do not investigate

Working Together to Safeguard Children 2015

If an allegation is made against any adult who comes into contact with children in either a paid or unpaid capacity in the setting, the child minder or any person in the child minder setting

Childcare provider contacts the

1. LADO 024 76833443
2. Ofsted 0300 123 1231

It is your duty to report concerns to the Manager or Safeguarding Officer. If you feel that your concern has not been dealt with appropriately you have a duty to report your concern directly.

LADO to be consulted on initial planning and whether the member of staff/person concerned is to be informed of the allegation; the LADO will ask you to complete a referral form to be returned to the secure GC SX email address LADO@coventry.gcsx.gov.uk . If there is an offence or on-going risk to the child you must make a referral to Social Care 024 76788555 or contact the Emergency Duty Team - Out of Hours 76832222 and or the Police)

Position of Trust (PoT) meeting may be convened to consider allegation and plan any further enquiries/investigation – this is a multi-agency meeting which may include the Police and Ofsted and is chaired by the LADO to exchange information and to decide on formal investigation processes. There are occasions when investigations are in process before a PoT is convened these are usually when the allegation has been made directly to the Police

Allegation is unfounded setting/CORA to support member of staff/child minder returning to work

Allegation is founded, disciplinary procedures apply and any potential criminal proceedings.

Manager/Senior Officer to make a referral to DBS . In the event of Child minder settings Ofsted will withdraw registration and will liaise on the referral to the DBS - 01325953795

Useful Coventry and National Safeguarding Children Contacts:

Emergency:

If a child is in immediate danger or left alone, you should contact the police on 0345 113 5000 or, call 999 in an emergency.

Police Child Abuse Investigation Unit: 024 7653 9044.

Social worker (out of office hours): 024 7683 2222.

Non-Emergency:

If there is no immediate danger or you need advice or information, you should call the Referral and Assessment Service (RAS) or Children First Door on 024 7678 8555.

Online Safety: Share Aware NSPCC (Preventing Abuse and Keeping Children Safe):

<https://www.nspcc.org.uk/preventing-abuse/keeping-children-safe/share-aware/>

Online Safety helpline on 0808 8005002 to get advice on anything from the latest social networks to parental controls. Continue on further links on this website to discover more on how to keep children safe.

Advice and Information:

If you want to discuss your concerns or need advice e.g. if you are not sure whether your concerns are justified, you would like more information about issues like confidentiality or you would like to know what happens next (after you have reported your concerns), do one of the following:

- Call Childline on 0800 1111
- Call the NSPCC Helpline on 0808 800 5000
- Foleshill Neighbourhood Team
Foleshill Police Station CV LPU
101 Ext 8316 402
- Check Coventry LSCB procedures (see links above)

Prevent Duty:

If you have any queries regarding the above, or general matters regarding Prevent you can contact:

Geoff Thomas - Prevent Co-ordinator in Coventry

Geoff.Thomas@coventry.gov.uk

02476 831437

Or if you have concerns regarding extremism you can contact West Midlands Police through Security and Partnership Officer:

Sergeant 6762 Jas Baghria

j.baghria@west-midlands.pnn.police.uk

(101 ext. 7931 6535) Mob: 07825 112414

<http://counterextremism.lgfl.org.uk/> (Online link for further information on Prevent Duty)

Allegations against a member of staff:

Local Authority Designated Officer LADO - 02476 833 443

Ofsted – 0300 123 123 1

Female Genital Mutilation (FGM):

Rachel Oluyemi

FGM Project Coordinator

Coventry Haven

Tel: 02476 444077

email: r.oluyemi@btconnect.com

website: www.coventryhaven.co.uk